

# COLIN

---

Model No. 1325

## DESIGN STEPHAN VEIT

A coffee and side table with character. The COLIN skilfully plays with horizontal and vertical lines. The tabletop made of natural stone can be used alone as an eye-catcher or combined with a second level made of gray colored glass. It disappears discreetly in the round frame made of coated metal and makes the table look light.



**Model type**  
**Frame**  
 bent steel sheet  
 coated black  
**Size**  
 W - L - H  
 approx. in cm

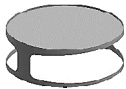
**Top**  
 glass 10 mm  
 colored glass  
 brown or gray  
**Top**  
 stone 2 cm  
 PG 2 - 4b  
**Tops**  
 upper and lower tray  
 colored glass 10 mm  
 brown or gray  
**Tops**  
 upper tray  
 colored glass 10 mm  
 brown or gray  
 lower tray stone 2 cm  
 PG 2 - 4b  
**Tops**  
 upper and lower tray  
 stone 2 cm  
 PG 2 - 4b



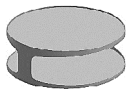
1325-I side table 50 ø x 45



1325-II side table with lower tray 50 ø x 45



1325-V coffee table 93 ø x 34



1325-VI coffee table with lower tray 93 ø x 34

Note: 1325-II / -VI On request as well upper top stone and lower top glass available. Please clearly indicate with your order.

**Price supplements for special orders:**  
 frame coated dark bronze  
 frame coated gold-colored or nickel-colored  
 frame lacquered to RAL  
 stone PG 5+6 only when remnant plates in stock / tray (surcharge on stone PG 2 - 4b)  
 side table  
 coffee table

